

METROMAP 2D OVERVIEW

Your window to high-quality, accurate
aerial mapping



MetroMap 2D Imagery

MetroMap is an aerial imagery data providing service, offering high-quality and accurate imagery to a subscriber base. It fulfils all the quality & accuracy requirements of sophisticated geospatial data users and provides an easy-to-consume product for varied applications across a diverse range of industries. Accessible via web-app or your own GIS application, MetroMap Imagery is available in flexible plans to suit your business requirements

MetroMap imagery offers:

Quality & Accuracy

MetroMap imagery provides you survey-grade accuracy with excellent colour balance that is as close to the real-world as possible

Ease of Access

Accessible via web browser or an API exported to your own GIS, MetroMap imagery is at your fingertips, in an easy to consume fashion that you are accustomed to.

Unlimited Data

Say goodbye to download limits and focus on your work. All MetroMap plans come with unlimited data usage

Frequently updated metro coverage

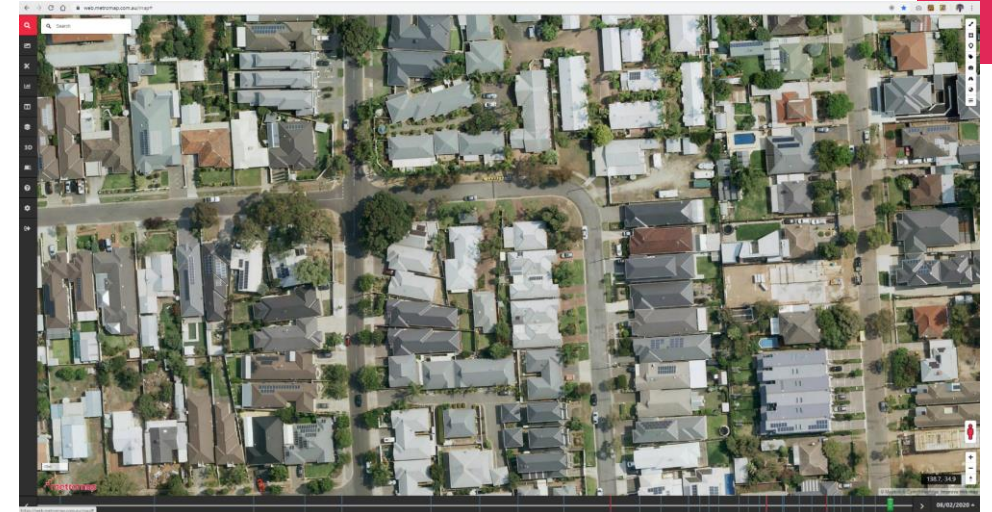
MetroMap imagery offers up to 4 yearly captures in metros and up to 2 in other major growth areas

Additional coverages in key regional areas

MetroMap's regional coverage offers you datasets beyond metros; this coverage is continuously growing

Current & Historical Imagery

MetroMap offers historical archives from the beginning of the 21st century in key locations and data as far back as 1943 in Sydney



MetroMap 2D Web Interface

Measurement tools at your fingertips

MetroMap allows you to accurately calculate distances and areas and save the information via layers or export them to a third-party GIS software using a .KML file.

Download imagery the way you want

Using the various download tools, you can obtain georeferenced, full resolution imagery of large areas for offline usage. These images can be downloaded in different coordinate systems and image formats

View Historical Data and assess change

MetroMap's Swipe Tool allows you to view two datasets from different times, side by side, aiding change analysis

Study vegetation vigour with the help of Near Infrared Imagery

In addition to standard natural colour imagery, MetroMap offers near-infra-red (NIR) imagery coverages for several cities. NIR imagery is useful for all applications involving vegetation vigour such as management of parks and gardens, irrigation systems, agriculture and horticulture, as well as bushfire burn severity.

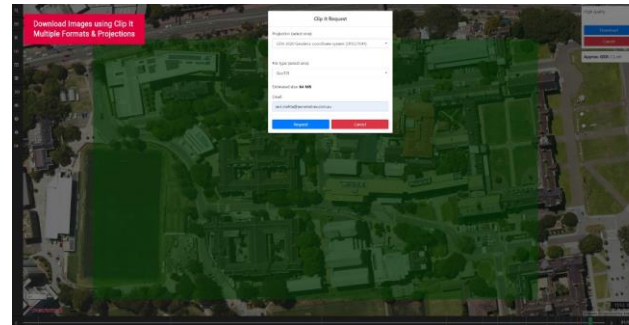
Technical Specifications

Image Resolution (GSD)	5 - 10 cm
Accuracy (RMSE)	2 - 3 pixel
Projections	GDA 94/2020, MGA 94/2020, Web Mercator
Image Export Formats	JPEG, PNG, IMG, GeoTIFF, Geospatial PDF
Imagery Bands	3 Band (RGB) and 4 Band (RGB+nIR)
Layer Import	<i>Supported file types:</i> GeoJSON, KML, KMZ (geometry) and Shapefile (zipped) <i>Supported formats:</i> Point, Polygon and LineString
Layer Export	KML
API Access	Available in Enterprise plans, compatible with most commonly used GIS applications



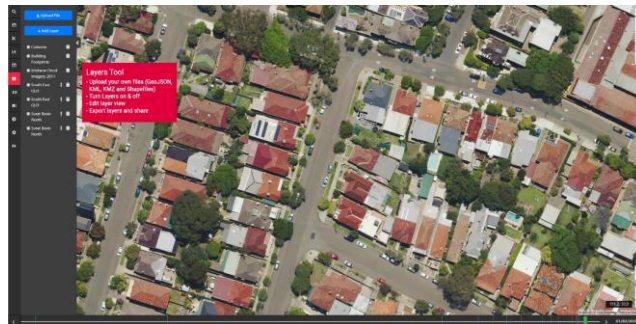
MetroMap 2D Tools

Measure line distances & polygon areas, and add marker labels

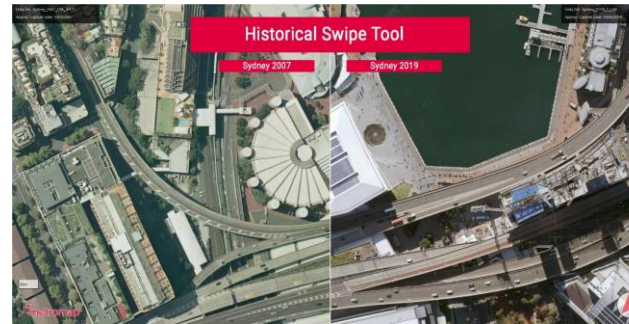


Export images in multiple formats & projections using "Clip It Tool"

Import & Export Layers using the Layers Tool



Customize layers to suit your requirements



Compare datasets from two different dates using the "Swipe Tool"

Customize imagery using the Filter Tool for Visualisation purposes



Access historical imagery via the date slider/drop-down

Access Google Streetview



Start Your Free Trial Today

www.metromap.com.au/trial



 **metromap**
powered by aerometrex